



Portable Round Bar

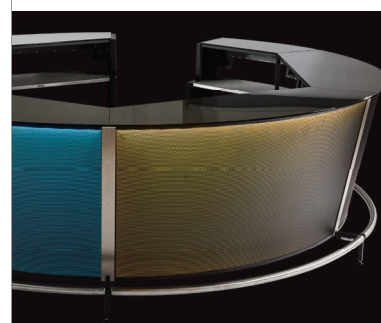
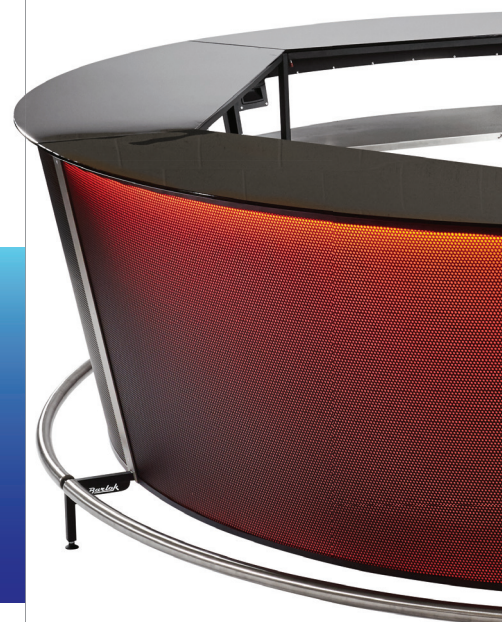
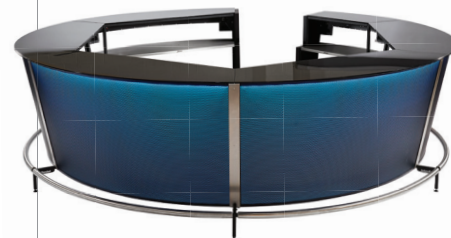
Barlok® Revolution is a 4m diameter RGBW LED circular bar and a further development of the standard Barlok® range offered by Portable Floormaker.

Barlok® Revolution consists of 6 modular units, which are secured together without the use of tools or screws offering a fast and easy installation and breakdown and quick turn around on room space.

Each Barlok® Revolution Light Panel is colour controllable; allowing the main Red, Green, Blue and White colours to be achieved via the DMX controller provided but also thousands of other colours using the mixer wheel. The DMX option allows the bar to be integrated into event design and production, being able to be utilised alongside video walls, display screens and uplighters or as a feature stand alone option.

Purpose designed flight case options are available to securely house all bar components during transporting and storing. Only 3 flight cases are required to contain the entire Barlok® Revolution unit.

Barlok® Revolution is a revenue generator and is perfect for hotels, wedding venues, marquee rental companies, caterers and any event venue and can become a unique and enticing focal point for any event.



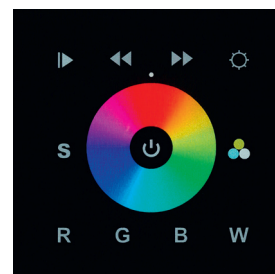
FINISHES	<div data-bbox="409 1737 546 1880"> <p>Black Acrylic bar top/ Powder Coated Steel panel</p> </div> <div data-bbox="563 1737 700 1880"> <p>Custom bar top/panel</p> </div>
FRAME	<div data-bbox="409 1951 546 2094"> <p>Black Powder Coated Steel & Stainless Steel</p> </div> <div data-bbox="563 1951 700 2094"> <p>Custom Powder Coated Steel & Stainless Steel</p> </div>



Portable Round Bar

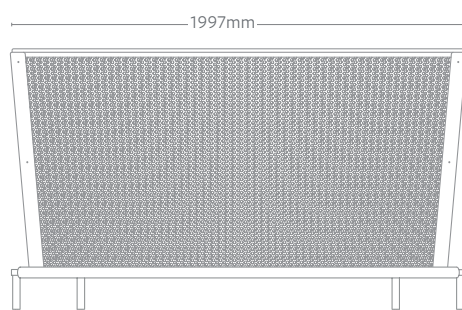
Features – Benefits

- No screws or tools – quick and easy set up
- Bar breaks down completely flat – easy storage and transportation
- Hard wearing, wipe clean surface – low maintenance
- Composition – rigid and sturdy construction has the look and feel of a permanent installation
- 3 year warranty on manufacture, labour and materials, 1 year on electrics – peace of mind
- Fully adjustable feet – can be used on slightly uneven surfaces
- Bar units can be used individually or in groups if required
- Can be configured as a fully DMX controlled unit
- Flight Cases – purpose designed, made to measure in-house manufactured to ensure the units are secure during storage and transportation
- Lacquered flight case – fits through standard single width doorways

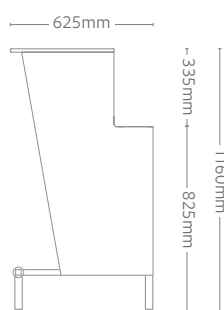


Specifications

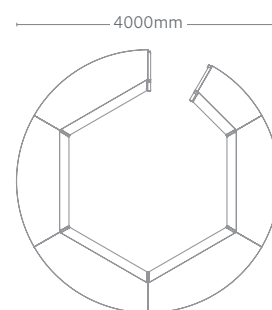
- Bar specification:
 - 12mm commercial grade acrylic bar top counter
 - 25mm box section mild steel frame
 - 2mm protective mesh front panel
 - 2mm stainless steel shelving
 - High quality LEDs and driver



FRONT



SIDE



ROUND PLAN



PFM Portable | Floormaker

T | +44 (0) 1332 814 080 **F** | +44 (0) 1332 814 443 **E** | enquiries@portablefloormaker.co.uk **W** | www.portablefloormaker.co.uk

f **e** **in** | Unit 4 Sycamore Road . Trent Lane Industrial Estate . Castle Donington . Derbyshire . DE74 2NW . United Kingdom